

Customer :

customer

Customer part :

customer part

Comment :

Comment

S1=3.51

S2=5

Tmax=465

Tp S2=504.0

PI=0.41

HI=95

Sample =1688.10

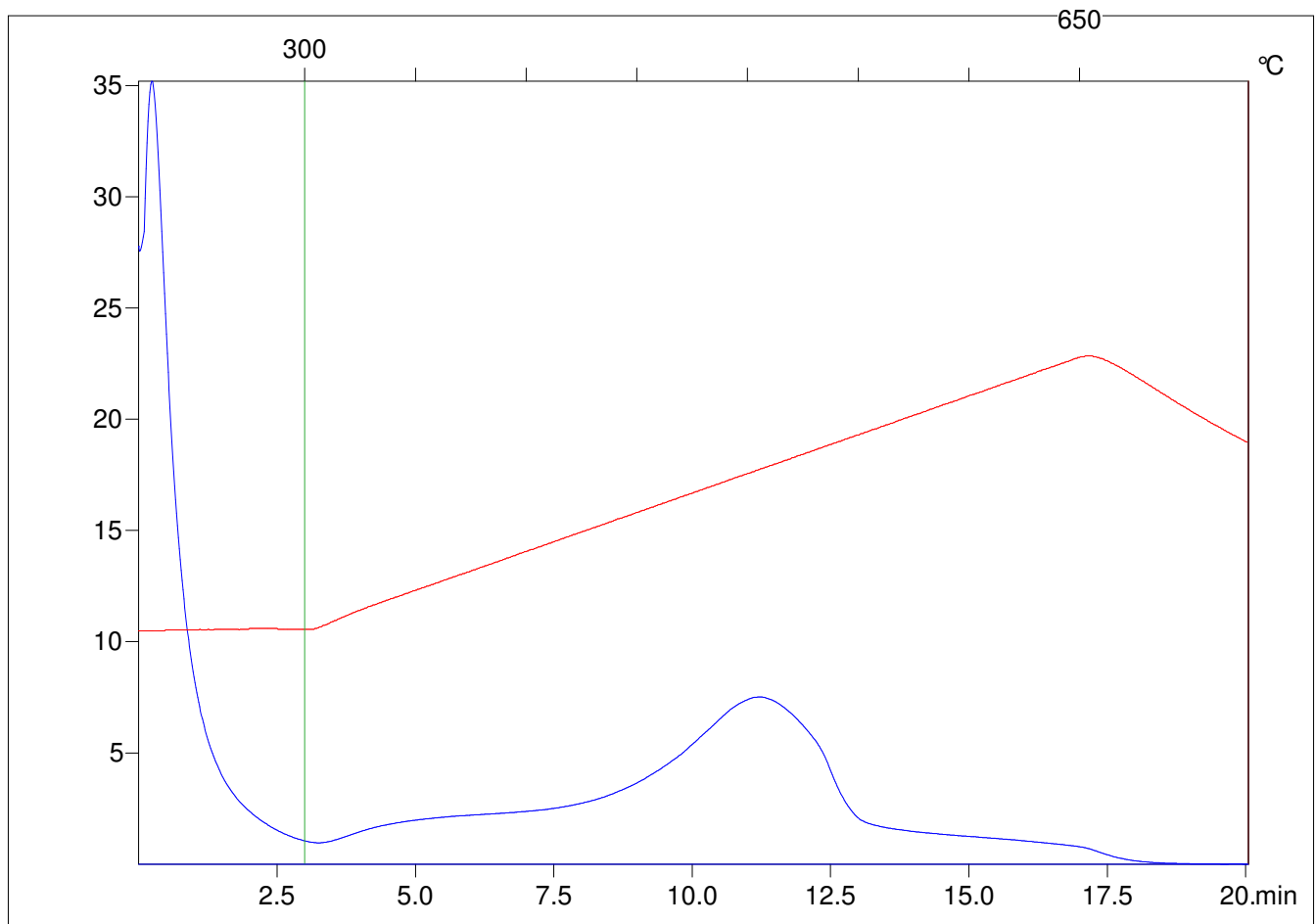
Method =Bulk Rock

Cycle=Basic

KFID(10*9)=1444

Qty =70.6

TOC=5.25



C:\VINC\PK1_1792\PK052.R00 : FID pyrolysis graphic

State

Pyro Status

Oxi Status